

SP3300 VHF



Contents

1 Introduction 5

2 Required Equipment 5

3 Installation and Usage of Software 5

4 Method 5

5 Password 6

6 The Program 6

Appendix 15

1 Introduction

This programming guide concerns the programming of the SP3300 Portable GMDSS VHF radio.

The audience is intended to be Thrane & Thrane authorized service-personnel having received proper training. Basically, the program is self-explanatory. Please read the messages on the PC display carefully.

It is important to understand, that this programming utility also covers other models of radios which are not in the Thrane & Thrane product portfolio right now. Therefore, some functions are not allowed (no reaction on changes made).

2 Required Equipment

- SP3300 Portable GMDSS VHF radio
- Programming kit including BNC antenna adaptor and programming cable, (part no. 739920)
- PC fitted with a COM-port, MS Windows XP
- Programming software, supplied on CD-ROM (partno: 739921) or downloaded from the Thrane & Thrane extranet.
- Battery: lithium battery (part no.: 55.360) or charged NiCa battery (part no.: 55.359)

3 Installation and Usage of Software

Create and name a directory on the C-drive, for example "SP3300". Copy the files from the CD-ROM into that directory.

Run the program by executing the file:

SP3300.exe

The functions and options will be described later in this programming guide.

4 Method

- 4.1 Fit the Antenna / BNC adapter to radio, make sure the BNC adapter connects properly to the outer ring of the antenna connector, fit battery pack to radio.
- 4.2 Connect programming cable to COM port 1 of PC and then to the antenna adaptor of radio.
The cable contains electronics and this will eventually break if connected in reverse order!
- 4.3 Turn on radio while pressing down Scan, D/W and Û keys. The radio should now show PROG in the LCD display.
- 4.4 Start PC software by opening the execute file SP3300 (see chapter 6).

5 Password

PASSWORD IS: jack-tarr

Please note that on-screen letters are in capitals despite the settings of the keyboard.

6 The Program

When starting the program, the initial box will appear as a window on the PC display. Note that this is NOT a mouse-cursor driven window. Use the direction keys to navigate in the window.

```
SP3300 RADIO CONFIGURATION PROGRAM
-----
Version 2.0
Copyright (C) SAILOR 2004

WARNING
This program is for SAILOR use ONLY and should not
be used by any third party except with the express permission
of SAILOR.

Enter Password:
```

Enter the mentioned password:

```
SP3300 RADIO CONFIGURATION PROGRAM
-----
Version 2.0
Copyright (C) SAILOR 2004

WARNING
This program is for SAILOR use ONLY and should not
be used by any third party except with the express permission
of SAILOR.

Enter Password: *****

Which COM port is to be used? <1 or 2>

Type 1, 2 or [ESC] to exit program
```

6.1 Press PC key “1” to continue (if the cable and connector is added to port 2 – then choose port “2”). The PC display will be similar to the below:

```

SP3300 RADIO CONFIGURATION PROGRAM
-----
Using COM1 port on computer                                NUM Data: LOADED
                                                            Software: 1.6

Select option:-
1 - Load NUM data from Radio
2 - Load NUM data from File
3 - View/Modify NUM data
4 - Save NUM data to Radio
5 - Save NUM data to File
6 - CLONE from existing Radio
7 - Exit Program

Use ↑↓ [Enter] or type option number, type [ESC] to exit program

```

In case of re-programming: Press key “1” to continue. Please note that radios leave the factory with a factory setting complying with the regulations. The PC display will be similar to the display shown below:

```

Load NUM data from Radio
Connect radio, press any key when ready

NUM Data
-----
00: 10: 20: 30: 40:
01: 11: 21: 31: 41:
02: 12: 22: 32: 42:
03: 13: 23: 33: 43:
04: 14: 24: 34: 44:
05: 15: 25: 35: 45:
06: 16: 26: 36: 46:
07: 17: 27: 37: 47:
08: 18: 28: 38: 48:
09: 19: 29: 39: 49:
0A: 1A: 2A: 3A: 4A:
0B: 1B: 2B: 3B: 4B:
0C: 1C: 2C: 3C: 4C:
0D: 1D: 2D: 3D: 4D:
0E: 1E: 2E: 3E: 4E:
0F: 1F: 2F: 3F: 4F:

Any key to continue, [ESC] to exit

```

Press any key and the data from the radio will appear, ready for editing:

```

Load NUM data from Radio

Loading NUM data from radio
NUM data loaded successfully

NUM Data
00: 14F8  10: 3333  20: 0000  30: 0000  40: FFFF
01: 3200  11: 3333  21: 0000  31: 0000  41: FFFF
02: 3333  12: 3333  22: 0000  32: 0000  42: FFFF
03: 3303  13: 3333  23: 0000  33: 0000  43: FFFF
04: 0000  14: 3333  24: 0000  34: 0400  44: FFFF
05: 0000  15: 3333  25: 0000  35: 0000  45: 1010
06: 0033  16: 3333  26: 0000  36: 0000  46: FFFF
07: 3333  17: 3333  27: 0000  37: 0000  47: FFFF
08: 3333  18: 33FF  28: 0000  38: 1002  48: FFFF
09: 3333  19: 0000  29: FFFF  39: 0506  49: FFFF
0A: 3333  1A: 0000  2A: FFFF  3A: FFFF  4A: FFFF
0B: 3330  1B: 0000  2B: FFFF  3B: FFFF  4B: FFFF
0C: 0030  1C: 0000  2C: 0000  3C: FFFF  4C: FFFF
0D: 0003  1D: 0000  2D: 0000  3D: FFFF  4D: FFFF
0E: 3033  1E: 0000  2E: 0000  3E: FFFF  4E: FFFF
0F: 3333  1F: 0000  2F: 0000  3F: 1660  4F: FFFF

Any key to continue

```

Now the initial data is loaded and can be altered following the instructions:
Press any key to go back to main menu:

```

SP3300 RADIO CONFIGURATION PROGRAM
-----

Using COM1 port on computer          NUM Data: LOADED
                                      Software: 1.6

Select option:-

1 - Load NUM data from Radio
2 - Load NUM data from File
3 - View/Modify NUM data
4 - Save NUM data to Radio
5 - Save NUM data to File
6 - CLONE from existing Radio
7 - Exit Program

Use [1] [Enter] or type option number, type [ESC] to exit program

```

Press key "3" to modify data:


```

View/Modify NVM data
Configuration Settings
Sign-on text: GMDSS
Country: INT
Second Mode Enabled: NO
Turbo Mode: NO
Scanning Enabled: YES
Channel 10 Scan Enabled: YES
Dual Watch Enabled: YES
Tri Watch Enabled: YES
Priority Chan <PG> Enabled: YES
User can disable first key beep: YES
Startup Channel <SC>: 16
Watch Channel <WC>: 16
USA/Canada Weather Channels: NO
ATIS Enabled: NO
ATIS Identifier: -----
ATIS Killer Enabled: NO
DSC Enabled: NO
DSC Identifier <MMSI>: -----
GMDSS Enabled: YES

+1+ select [Enter] modify [PgDn] next [ESC] exit

```

Comments//Please note that:
The screen copy shows the factory settings.

Sign-on text

Toggles between different start-up messages: Blank, GMDSS or DEBEG

Country:

Selects primary mode. NVM's with INT (International) selected for the First Country flag will receive on the INT Rx frequencies. The radio can be switched to USA with weather channels if the VOL key is activated on power-up unless the Selected Mode Only flag is set (Second Mode=YES).

Second Mode:

Enables or disables switch to USA with weather channels.

Scanning:

Enables or disables Scan and Memory Scan functions.

Channel 10 Scan:

Enables or disables channel 10 from SCAN facility (Scanning channel 10 is not permitted in some countries)

Dual Watch:

Enables or disables Dual Watch.

Tri Watch:

Enables or disables Tri Watch.

Priority Channel:

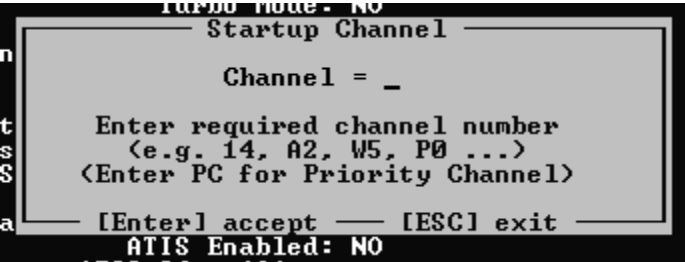
Selects alternate channel to be monitored when Dual Watch is enabled.

First key beep:

Enables or disables key beep.

Startup Channel (SC):

Selects the channel to be displayed on power up, usually Channel 16. Pressing "SPACE" results in the shown window:



Watch Channel (WC):

Selects third channel to be monitored when Tri Watch is enabled.

USA/Canada Weather Channels:

Enables or disables USA weather channels.

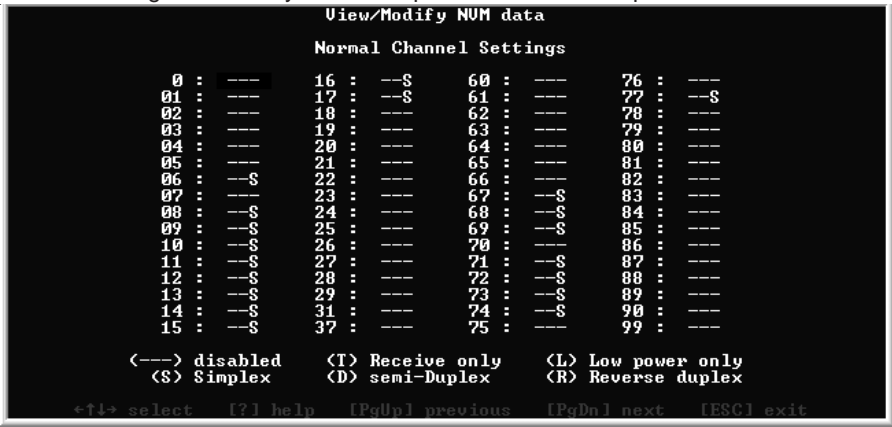
ATIS Identifier:

An option which can be implemented, but it is not standard. Stores Automatic Transmission Identification System (ATIS).

DSC Identifier:

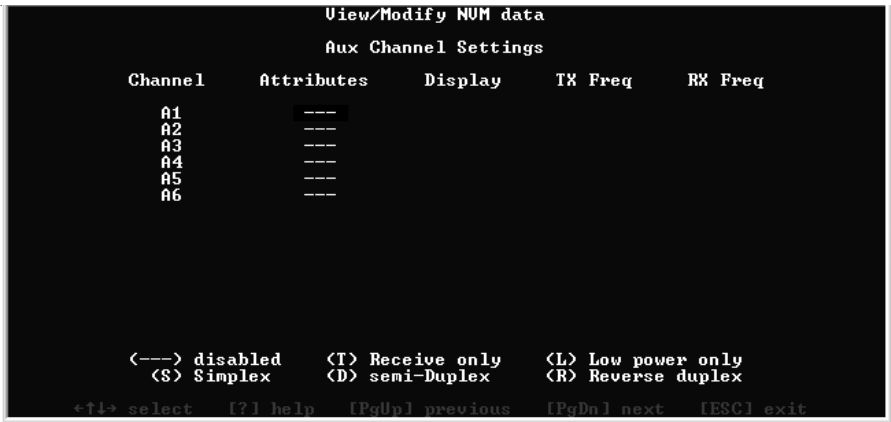
Maritime Mobile Service Identity (MMSI) number – NOT AN OPTION FOR GMDSS PORTABLE VHF.

Press the "Page Down" key and more parameters shows up:

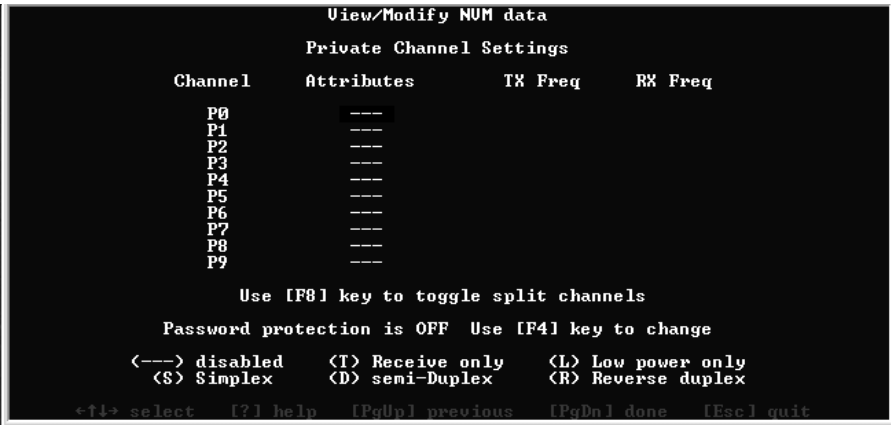


- Attribute settings can be changed by
- a: Select required channel, using direction keys
 - b: Enter one of the attributes shown on the list at the bottom of the screen, simply by pressing the selected key
 - c: Confirm by pressing "Enter"

This procedure also includes the attribute-settings shown in the next screencopy:
Press "Page Down" once more:



It may not be possible to change these attributes.
Press "Page Down" once more:



"Page Down" confirms any changes made.
It may not be possible to change these attributes.

PLEASE NOTE: The password protection toggle shall NOT be used. Do NOT change this attribute – it does not apply to the GMDSS functionality.

```
SP3300 RADIO CONFIGURATION PROGRAM
-----
Using COM1 port on computer                                NUM Data: LOADED
                                                           Software: 1.6

Select option:-
1 - Load NUM data from Radio
2 - Load NUM data from File
3 - View/Modify NUM data
4 - Save NUM data to Radio
5 - Save NUM data to File
6 - CLONE from existing Radio
7 - Exit Program

Use ↑↓ [Enter] or type option number, type [ESC] to exit program
```

Press key “4” to save data in the radio.
Press key “5” to save data to a disk.

```
Save NUM data to File

Enter Data Ident: _

NUM Data
00: 14F8  10: 3333  20: 0000  30: 0000  40: FFFF
01: 3200  11: 3333  21: 0000  31: 0000  41: FFFF
02: 3333  12: 3333  22: 0000  32: 0000  42: FFFF
03: 3303  13: 3333  23: 0000  33: 0000  43: FFFF
04: 0000  14: 3333  24: 0000  34: 0400  44: FFFF
05: 0000  15: 3333  25: 0000  35: 0A00  45: 1010
06: 0033  16: 3333  26: 0000  36: 0000  46: FFFF
07: 3333  17: 3333  27: 0000  37: 0000  47: FFFF
08: 3333  18: 33FF  28: 0000  38: 1002  48: FFFF
09: 3333  19: 0000  29: FFFF  39: 0506  49: FFFF
0A: 3333  1A: 0000  2A: FFFF  3A: FFFF  4A: FFFF
0B: 3330  1B: 0000  2B: FFFF  3B: FFFF  4B: FFFF
0C: 0030  1C: 0000  2C: 0000  3C: FFFF  4C: FFFF
0D: 0003  1D: 0000  2D: 0000  3D: FFFF  4D: FFFF
0E: 3033  1E: 0000  2E: 0800  3E: FFFF  4E: FFFF
0F: 3333  1F: 0000  2F: 0000  3F: 1660  4F: FFFC

Enter Ident Text      [Enter] for none      [ESC] to exit.
```

The name “xyz” has been chosen for the example:

```

Save NUM data to File
Enter NUM Data File Name: C:\XYZ.DAT

                                XYZ
00: 14F0    10: 3333    20: 0000    30: 0000    40: FFFF
01: 3200    11: 3333    21: 0000    31: 0000    41: FFFF
02: 3333    12: 3333    22: 0000    32: 0000    42: FFFF
03: 3303    13: 3333    23: 0000    33: 0000    43: FFFF
04: 0000    14: 3333    24: 0000    34: 0400    44: FFFF
05: 0000    15: 3333    25: 0000    35: 0A00    45: 1010
06: 0033    16: 3333    26: 0000    36: 0000    46: FFFF
07: 3333    17: 3333    27: 0000    37: 0000    47: FFFF
08: 3333    18: 33FF    28: 0000    38: 1002    48: FFFF
09: 3333    19: 0000    29: FFFF    39: 0506    49: FFFF
0A: 3333    1A: 0000    2A: FFFF    3A: FFFF    4A: FFFF
0B: 3330    1B: 0000    2B: FFFF    3B: FFFF    4B: FFFF
0C: 0030    1C: 0000    2C: 0000    3C: FFFF    4C: FFFF
0D: 0003    1D: 0000    2D: 0000    3D: FFFF    4D: FFFF
0E: 3033    1E: 0000    2E: 0800    3E: FFFF    4E: FFFF
0F: 3333    1F: 0000    2F: 0000    3F: 1660    4F: FFFC

Enter file name (and path if required) or [ESC] to exit
```

The file can be used later for reprogramming other radios.

In case of reloading the factory settings by loading the “mg1.dat” data file supplied on the CD-ROM:

Start the programming mode as previously described. In the option menu, press “2” to load NVM-data from a file. In fact, it is the same procedure as loading NVM-data from the radio. When prompted for a file name, choose “mg1.dat” from the location where the file is saved (in this example it is located on c:\)

```

Load NUM data from File
Enter NUM Data File Name: C:\MG1.DAT

                                NUM Data
00:      10:      20:      30:      40:
01:      11:      21:      31:      41:
02:      12:      22:      32:      42:
03:      13:      23:      33:      43:
04:      14:      24:      34:      44:
05:      15:      25:      35:      45:
06:      16:      26:      36:      46:
07:      17:      27:      37:      47:
08:      18:      28:      38:      48:
09:      19:      29:      39:      49:
0A:      1A:      2A:      3A:      4A:
0B:      1B:      2B:      3B:      4B:
0C:      1C:      2C:      3C:      4C:
0D:      1D:      2D:      3D:      4D:
0E:      1E:      2E:      3E:      4E:
0F:      1F:      2F:      3F:      4F:

Enter file name (and path if required) or [ESC] to exit
```

When the NVM-data has been loaded into the PC, press any key to upload the data.

```

Load NUM data from File

Enter NUM Data File Name: MG1.DAT
File loaded successfully

MED GMDSS
00: 10E8  10: 3333  20: 0000  30: 0000  40: FFFF
01: 3200  11: 3333  21: 0000  31: 0000  41: FFFF
02: 3333  12: 3333  22: 0000  32: 0000  42: FFFF
03: 3303  13: 3333  23: 0000  33: 0000  43: FFFF
04: 0000  14: 3333  24: 0000  34: 0400  44: FFFF
05: 0004  15: 3333  25: 0000  35: 0A00  45: 1010
06: 0433  16: 3333  26: 0000  36: 0000  46: FFFF
07: 3333  17: 3333  27: 0000  37: 0000  47: FFFF
08: 3333  18: 33FF  28: 0000  38: 1000  48: FFFF
09: 3333  19: 0000  29: FFFF  39: 0610  49: FFFF
0A: 3333  1A: 0000  2A: FFFF  3A: FFFF  4A: FFFF
0B: 3330  1B: 0000  2B: FFFF  3B: FFFF  4B: FFFF
0C: 0030  1C: 0000  2C: 0000  3C: FFFF  4C: FFFF
0D: 0003  1D: 0000  2D: 0000  3D: FFFF  4D: FFFF
0E: 3033  1E: 0000  2E: 0800  3E: FFFF  4E: FFFF
0F: 3333  1F: 0000  2F: 0000  3F: FFE9  4F: FFFC

Any key to continue

```

Press any key and return to options. Choose "4" to save data to the radio.

If the programming is successful, the PC display will be similar to below after approximately 20 seconds.

```

Save NUM data to Radio

Verifying NUM data in radio
Verify successful, radio is programmed

NUM Data
00: 10E8  10: 3333  20: 0000  30: 0000  40: FFFF
01: 3200  11: 3333  21: 0000  31: 0000  41: FFFF
02: 3333  12: 3333  22: 0000  32: 0000  42: FFFF
03: 3303  13: 3333  23: 0000  33: 0000  43: FFFF
04: 0000  14: 3333  24: 0000  34: 0400  44: FFFF
05: 0004  15: 3333  25: 0000  35: 0A00  45: 1010
06: 0433  16: 3333  26: 0000  36: 0000  46: FFFF
07: 3333  17: 3333  27: 0000  37: 0000  47: FFFF
08: 3333  18: 33FF  28: 0000  38: 1000  48: FFFF
09: 3333  19: 0000  29: FFFF  39: 0610  49: FFFF
0A: 3333  1A: 0000  2A: FFFF  3A: FFFF  4A: FFFF
0B: 3330  1B: 0000  2B: FFFF  3B: FFFF  4B: FFFF
0C: 0030  1C: 0000  2C: 0000  3C: FFFF  4C: FFFF
0D: 0003  1D: 0000  2D: 0000  3D: FFFF  4D: FFFF
0E: 3033  1E: 0000  2E: 0800  3E: FFFF  4E: FFFF
0F: 3333  1F: 0000  2F: 0000  3F: FFE9  4F: FFFC

Any key to continue

```

When the programming has been completed, !

Press any key to revert to the options menu.

Press "Esc" to quit the program.

Shut off the radio.

Disconnect the cable from the antenna-adaptor.

Disconnect the antenna adaptor from the radio.

Disconnect the programming cable from the PC.

In either case, thoroughly test that the radio operates as expected. That is, check the settings simply by performing calls.

Appendix

Model	Programming File
SP3300	MG1.DAT

